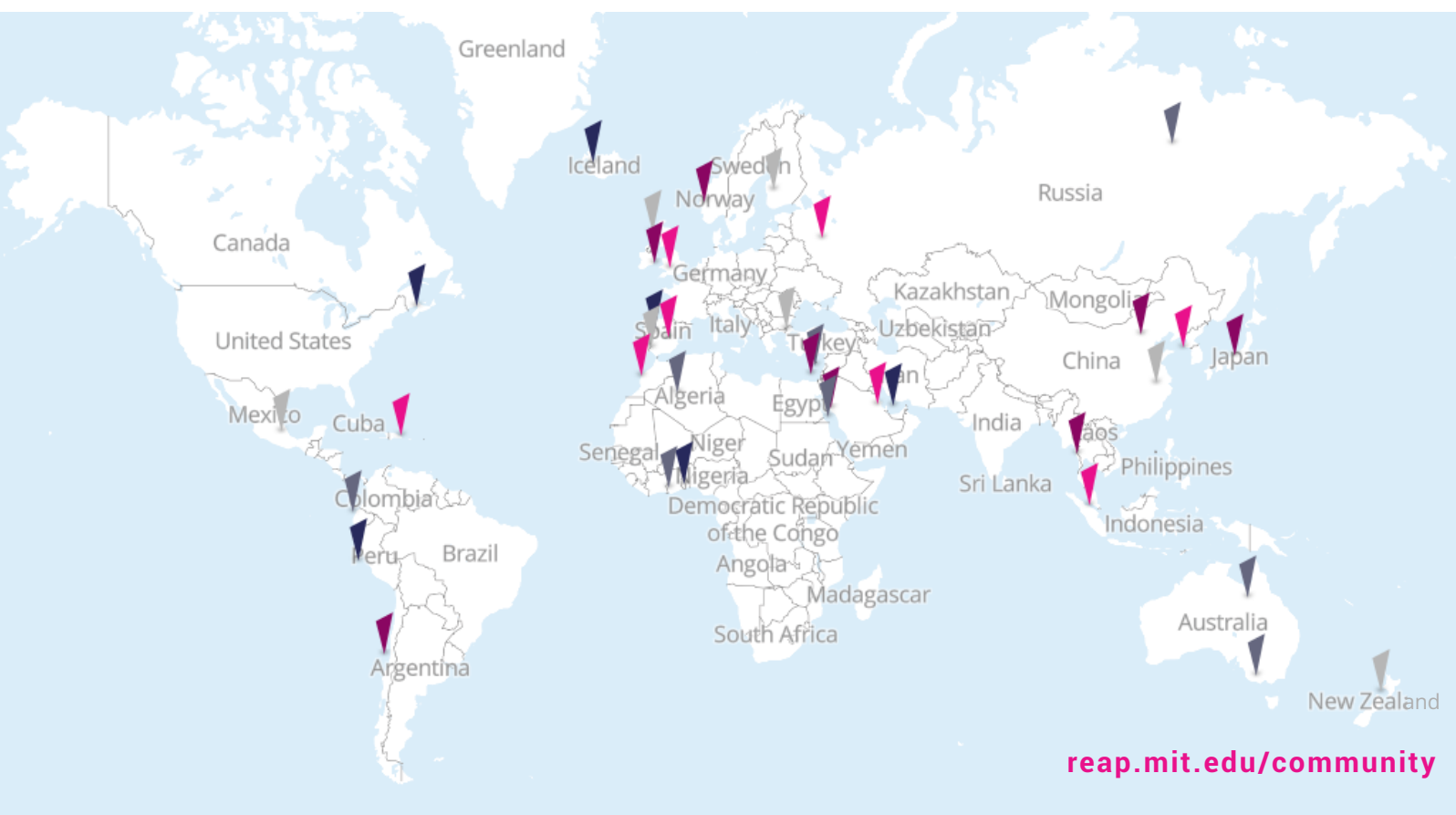


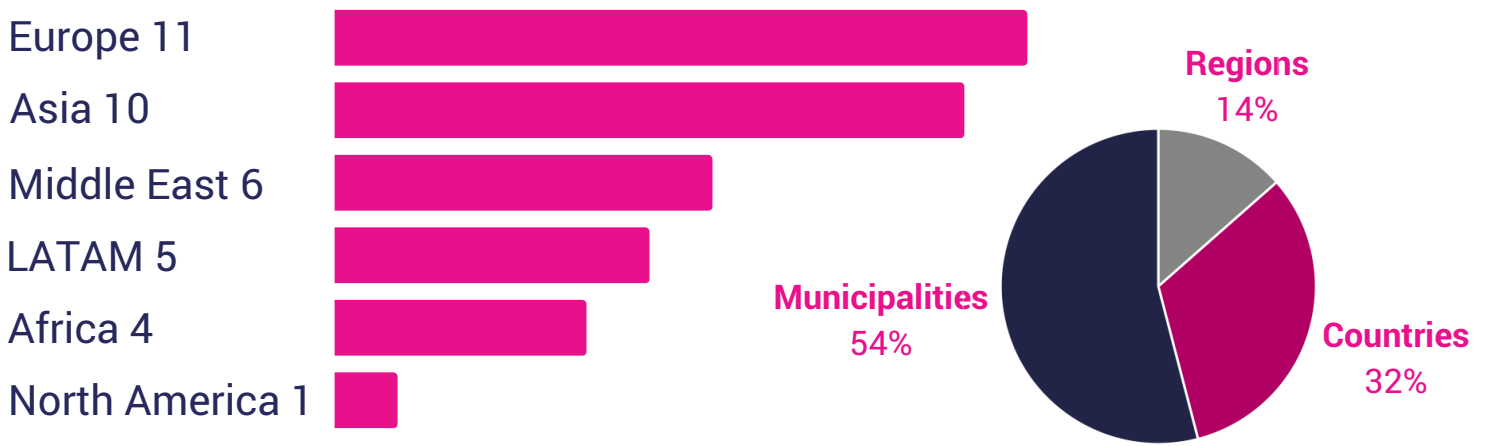


MIT REAP

Regional Entrepreneurship Acceleration Program



5 COHORTS - 37 REGIONS WORLDWIDE



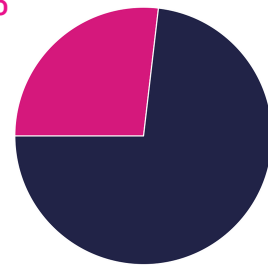
Avg. Population **10 Million** Population Range **300K-40M**

TOTAL PARTICIPANTS

365

FEMALE

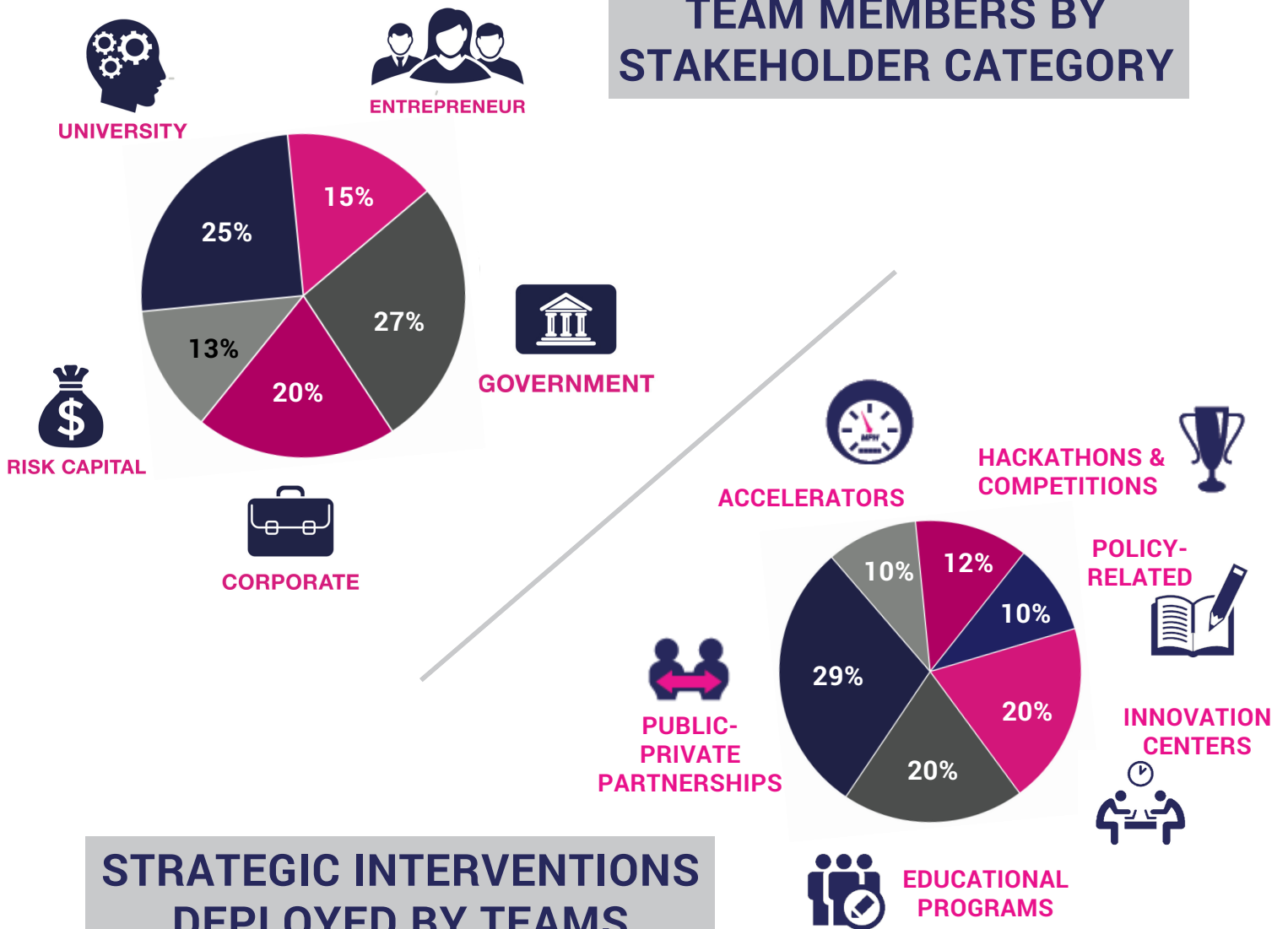
27%



MALE

73%

TEAM MEMBERS BY STAKEHOLDER CATEGORY



STRATEGIC INTERVENTIONS DEPLOYED BY TEAMS



MIT REAP

Regional Entrepreneurship Acceleration Program

SUCCESS STORIES SCOTLAND

Scottish Edge: Competition to address the shortage of seed capital || 15 prizes awarded between £10 & £50K || Provided ~£1.5M of additional cash to early stage businesses. scotedge.com



Scotland Can Do SCALE: Mass democratization of entrepreneurship in Scotland || Bringing "Disciplined Entrepreneurship" teaching to 2,000 people in a few years. cando.scot/scale

Entrepreneurial Scotland: Organization that emerged following REAP || Focused on high-growth entrepreneurship || Over 700 members to date. entrepreneurialscotland.com

Enterprise Teaching in Scotland's Universities: Royal Society of Edinburgh researched a report on undergraduate & graduate entrepreneurial education || All 19 University Principals have convened on next steps. rse.org.uk/cms/files/advice-papers/2015/AP15_09.pdf

SUCCESS STORIES LONDON

Growth Builder: Launched this public-private partnership in February 2016 that is aimed at helping earlier-stage businesses scale to size. growth-builder.com



Growth Builder is a 12-month program that accepts a cohort of up to 50 businesses that receive tailored introductions to supportive stakeholders as well as advice and mentoring on the different aspects and stages of scaling an early-stage startup.

Application Requirements include:

- +20% growth per year for the past two years
- 20 or more full-time employees
- Turnover of £5M

SUCCESS STORIES TOKYO

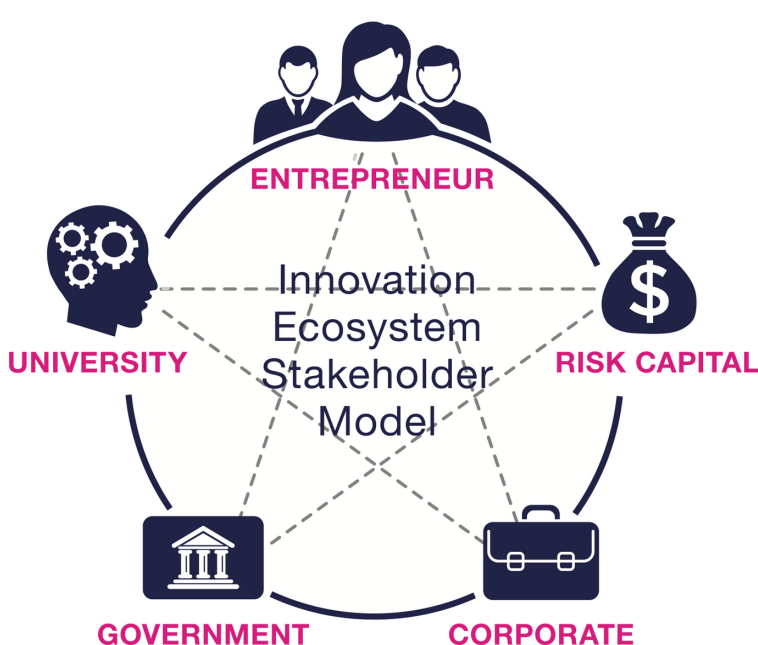
Tokyo Entrepreneurship and Innovation Center (TEIC): An open center based at Tokyo University of Science that promotes education and helps people from each stakeholder group engage one another. teic.tus.ac.jp



Main Activity Areas:

- E&I Research Hub - entrepreneurship & "intrapreneurship" research
- E&I Education Hub - mindset & skills development, "e-cool Tokyo"
- E&I Networking Hub - community building, sharing & making
- E&I Nurturing Hub - venture encouragement & mentoring

Goals of the TEIC: Serve as a "catalyst" and coordinator for ecosystem acceleration by promoting entrepreneurship education & skills training, inter-university collaboration || Team mentoring || Corporate partnerships & open innovation || Research networks || Other activities that bridge the gap across universities, risk capital, and corporate worlds.



The MIT Regional Entrepreneurship Acceleration Program provides opportunities for communities around the world to engage with MIT in an evidence-based, practical approach to strengthening innovation-driven entrepreneurial (IDE) ecosystems. We achieve this by translating research insights into practical frameworks, convening stakeholders focused on IDE, and educating regional leaders through team-based interaction to achieve economic and social progress.

reap.mit.edu